



Liquid Oxygen Components

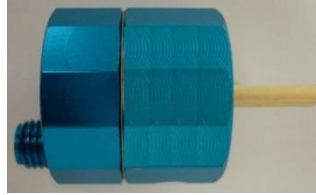
Flow Control Valve

Part #: 010-6000-426
 90° CPI inlet w/ SAE RV port & SAE-3 outlet
 20 psi w/ 0.25-15 range & 16 positions



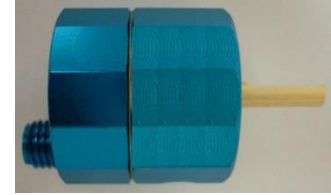
(10 piece minimum)

Part #: 010-6000-497
 CPI Offset inlet & 1/8" FNPT outlet
 22 psi w/ 0.25-6 range & 12 positions



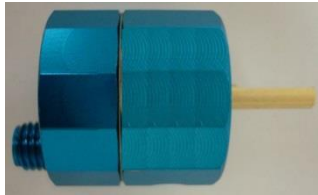
(10 piece minimum)

Part #: 010-6000-502
 CPI Offset inlet & 1/8" FNPT outlet
 22 psi w/ 0.50-15 range & 12 positions



(10 piece minimum)

Part #: 010-6000-599
 CPI Offset inlet & 1/8" FNPT outlet
 22 psi w/ 0.12-4 range & 12 positions



(10 piece minimum)

Part #: 010-6000-498
 1/8" FNPT inlet & 1/8" FNPT outlet
 19.5 psi w/ 0.25-6 range & 12 positions



(10 piece minimum)

Part #: 010-6000-512
 1/8" FNPT inlet & 1/8" FNPT outlet
 19.5 psi w/ 0.50-10 range & 12 positions



(10 piece minimum)

Part #: 010-6000-499
 Swivel Female DISS inlet & Male DISS outlet
 22 psi w/ 0.50-10 range & 12 positions
 Plate, Decal & Knob **not included**



(10 piece minimum)

Part #: 010-6000-500
 Swivel Female DISS inlet & Male DISS outlet
 22 psi w/ 0.25-6 range & 12 positions
 Plate, Decal & Knob **not included**



(10 piece minimum)

Part #: 010-6000-501
 Swivel Female DISS inlet & Male DISS outlet
 50 psi w/ 0.25-6 range & 12 positions
 Plate, Decal & Knob **not included**



(10 piece minimum)



Liquid Oxygen Components

Flow Control Valve

Part #: 010-6000-600
 SAE inlet & 90° Hose Barb outlet, Strap
 20 psi w/ 0-6 range & 12 positions



(10 piece minimum)

Part #: 010-6000-601
 90° CPI inlet & 1/8" F - NPT outlet
 20 psi w/ 0-6 range & 12 positions



(10 piece minimum)

Part #: 010-6000-605
 Swivel Female DISS inlet & Male DISS outlet
 22 psi w/ 0.50-15 range & 12 positions
 Plate, Decal & Knob **not included**



(10 piece minimum)

Flow Control Valve

Part #: 010-6000-608
 Swivel Female DISS inlet & Male DISS outlet
 22 psi w/ 0.50-15 range & 12 positions
 Plate, Decal & Knob **not included**



(10 piece minimum)

Flow Control Valve w/ Converter

Part #: 010-6000-584

Refurbished

300 FCV 4:1 Converter

(10 piece minimum)

Part #: 010-6000-585

Refurbished

850 FCV 4:1 Converter

(10 piece minimum)

Quick Disconnects

Part #: 001-1000-091 (SAE -121, -127)
 Female w/ Adapter & Nut
 Customer supplied Lip Seal



Discontinued, use 001-1000-127

Part #: 001-1000-092 (SAE -125)
 Male



Discontinued, use 001-1000-125

Part #: 001-1000-109 (SAE -126)
 Male Posi-Lock



Discontinued, use 001-1000-126



MADE IN USA

Liquid Oxygen Components

Quick Disconnects

Part #: 001-1000-110 (SAE -122, 129)
 Female without Adapter & Nut
 Customer supplied Lip Seal



Discontinued, use 001-1000-129

Part #: 001-1000-111 (SAE -124, -130)
 Female
 Customer supplied Lip Seal



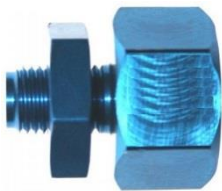
Discontinued, use 001-1000-130

Part #: 001-1000-112 (SAE -123, -131)
 Female Posi-Lock
 Customer supplied Lip Seal



Discontinued, use 001-1000-131

Part #: 001-1000-113
 Adapter & Nut



(10 piece minimum)

Part #: 001-1000-121 (SAE -091, -127)
 Female w/ Adapter & Nut
 Flotec supplied Lip Seal



Discontinued, use 001-1000-127

Part #: 001-1000-122 (SAE -110, -129)
 Female without Adapter & Nut
 Flotec supplied Lip Seal



Discontinued, use 001-1000-129

Part #: 001-1000-123 (SAE -112, -131)
 Female Posi-Lock
 Flotec supplied Lip Seal



Discontinued, use 001-1000-131

Part #: 001-1000-124 (SAE -111, -130)
 Female
 Flotec supplied Lip Seal



Discontinued, use 001-1000-130

Part #: 001-1000-125 (SAE -092)
 Male

SS Poppet



(10 piece minimum)



Oxygen Components

Quick Disconnects

<p>Part #: 001-1000-126 (SAE -109) Male Posi-Lock SS Poppel</p>  <p>(10 piece minimum)</p>	<p>Part #: 001-1000-127 (SAE -091 -121) Female w/ Adapter & Nut Flotec supplied Lip Seal & SS Poppel</p>  <p>(10 piece minimum)</p>	<p>Part #: 001-1000-129 (SAE -110, -122) Female without Adapter & Nut Flotec supplied Lip Seal & SS Poppel</p>  <p>(10 piece minimum)</p>
<p>Part #: 001-1000-130 (SAE - 111, -124) Female Flotec supplied Lip Seal & SS Poppel</p>  <p>(10 piece minimum)</p>	<p>Part #: 001-1000-131 (SAE - 112 -123) Female Posi-Lock Flotec supplied Lip Seal & SS Poppel</p>  <p>(10 piece minimum)</p>	<p>Part #: 001-1052-001 Cartridge Assembly Third Generation Design</p>  <p>(10 piece minimum)</p>
<p>Part #: 801-1014-001 PTFE Seal, Female QD, for CPI Adapter</p>  <p>(10 piece minimum)</p>	<p>Part #: 801-1054-005 Jam Hex Nut, Small Thread, Female QD</p>  <p>(10 piece minimum)</p>	<p>Part #: 801-1280-001 PTFE & Stainless-Steel Lip Seal, Female QD</p>  <p>(10 piece minimum)</p>



Liquid Oxygen Components

Quick Disconnects

Part #: 801-1267-001
 PTFE Seal, Female QD, Posi-Lock,
 for Tube Seal



(10 piece minimum)

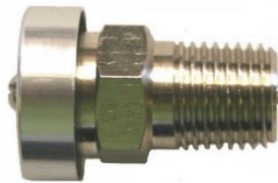
Part #: 801-1283-005
 Jam Hex Nut, Large Thread, Female QD



(10 piece minimum)

Relief Valves

Part #: 002-2000-003
 Brass Poppet mounted Clear Deflector Cap
 1/4" Male Pipe, Plated Brass body, 22 PSI



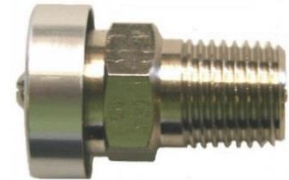
Ref. RV531BN4-22d
 Ref. RV531BB4-22d
 Ref. RV531A54-22d

Part #: 002-2000-006
 Brass Poppet
 1/8" Male Pipe, Clear Anodized, 30 PSI



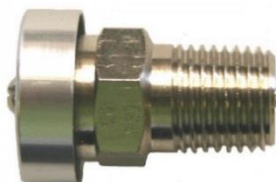
Ref. RV501A22-30d
 Ref. RV501A52-30d

Part #: 002-2000-080
 Brass Poppet mounted Clear Deflector Cap
 1/4" Male Pipe, Plated Brass body, 30 PSI



Ref. RV531BN4-30d
 Ref. RV531BB4-30d
 Ref. RV531A54-30d

Part #: 002-2000-085
 Brass Poppet mounted Black Deflector Cap
 1/4" Male Pipe, Plated Brass body, 70 PSI



Ref. RV5F1BN4-70d
 Ref. RV5F1BB4-70d
 Ref. RV5F1A54-70d

Part #: 002-2000-108
 Silencer



Part #: 002-2000-146
 Brass Poppet
 1/8" Male Pipe, Un-Plated Brass body, 30 PSI






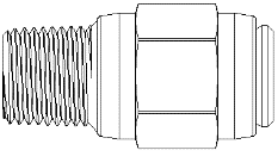


Ref. RV501BB2-30d



Liquid Oxygen Components

Relief Valves

<p>Part #: 002-2000-242 Brass Poppet 1/8" Male Pipe, Black Anodized, 80 PSI Inlet Filter Screen</p>  <p>Ref. RV551A92-80d Ref. RV551A52-80d</p>	<p>Part #: 002-2000-307 Brass Poppet w/ Silencer thread on Body 1/8" Male Pipe, Blue Anodized, 22 PSI Inlet Filter Screen</p>  <p>Ref. RV591A52-22d</p>	<p>Part #: 002-2000-311 Brass Poppet 1/4" Male SAE. Clear Anodized, 23 PSI Inlet Filter Screen</p>  <p>Ref. RV555A24-23d Ref. RV555A54-23d</p>
<p>Part #: 002-2000-312 Brass Poppet 1/4" Male SAE. Blue Anodized, 30 PSI Inlet Filter Screen</p>  <p>Ref. RV555A54-30d</p>	<p>Part #: 002-2000-313 Brass Poppet 1/8" Male Pipe, Clear Anodized, 30 PSI</p>  <p>Ref. RV501A22-30d Ref. RV501A52-30d</p>	<p>Part #: 002-2000-314 Brass Poppet 1/8" Male Pipe, Blue Anodized, 45 PSI</p> <p>Ref. RV501A52-45d</p>
<p>Ref. RV701A52-xxd 1/8" Male Pipe, Blue Anodized Aluminum, Brass Poppet</p> <p>Ref. RV751A52-xxd 1/8" Male Pipe, Blue Anodized Aluminum, Brass Poppet, Inlet Filter</p> <p>Ref. RV705A52-xxd 1/4" Male SAE, Blue Anodized Aluminum, Brass Poppet</p> <p>Ref. RV755A52-xxd 1/4" Male SAE, Blue Anodized Aluminum, Brass Poppet, Inlet Filter</p>	<p>Male Pipe RV701A5-xxd</p>  <p>Male SAE RV705A5-xxd</p> 	<p>Ref. RV701A54-xxd 1/4" Male Pipe, Blue Anodized Aluminum, Brass Poppet</p> <p>Ref. RV751A54-xxd 1/4" Male Pipe, Blue Anodized Aluminum, Brass Poppet, Inlet Filter</p> <p>Ref. RV705A56-xxd 3/8" Male SAE, Blue Anodized Aluminum, Brass Poppet</p> <p>Ref. RV755A56-xxd 3/8" Male SAE, Blue Anodized Aluminum, Brass Poppet, Inlet Filter</p>



B-Relief Valve Code (2019-05-31).123.xlsx.pdf

RV 5 0 1 A5 2 - 22 d

----- SPECIAL OPTIONS:
 a - 3rd Stamp
 b - Teflon Tape
 c - Special Testing
 d - Brass Bright Dipped Poppet
 s - Silicon Seals
 t - Guided Poppet

----- CRACKING PRESSURE IN PSI:

----- OPTIONAL OUTLET SIZE:
 2 - Special 1/8" outlet port
 3 - Special 3/16" outlet port
 4 - Special 1/4" outlet port
 6 - Special 3/8" outlet port

----- SIZE:
 2 - 1/8" Inlet port
 3 - 3/16" Inlet port
 4 - 1/4" Inlet port
 6 - 3/8" Inlet port

----- MATERIAL & FINISH:
 A2 - Aluminum, Clear Anodized
 AC - Aluminum, Colored Anodized
 A3 - Aluminum, Green Anodized
 A5 - Aluminum, Blue Anodized
 A6 - Aluminum, Red Anodized
 A8 - Aluminum, Gold Anodized
 A9 - Aluminum, Black Anodized
 BB - Brass, Bright Dipped
 BN - Brass, Nickel Plated

----- OPTIONAL OUTLET THREAD TYPE:
 2 - Female Pipe

----- THREAD TYPE:
 0 - Hose Barb
 1 - Male Pipe
 2 - Female Pipe
 5 - Male O-Ring Boss

----- OPTIONS:
 0 - None
 1 - Deflector Cap-body mounted
 2 - Orifice w/Filter Screen
 3 - Deflector Cap-poppet mounted
 4 - Filter Screen & Lock Wire Hole
 5 - Filter Screen
 6 - Deflector Cap-poppet mounted, Filter Screen & Lock Wire Hole
 7 - Lock Wire Hole
 8 - Deflector Cap-poppet mounted & Filter Screen
 9 - Filter Screen & Threaded Body
 A - Orifice w/Filter Screen & Lock Wire Hole
 B - Deflector Cap-poppet mounted & Lock Wire Hole
 C - Orifice w/Filter Screen, Lock Wire Hole & Threaded Body
 D - Orifice w/Filter Screen & Threaded Body
 E - Threaded Body
 F - Deflector Cap-poppet mounted (Black Anodized)

----- SERIES:
 1 - Face Seal, External Adjustment, Low Pressure Range
 5 - Radius Seal, Internal Adjustment, Low Pressure Range
 7 - Radius Seal, Internal Adjustment, Low Pressure Range, 7th Generation
 9 - Face Seal, External Adjustment, High Pressure Range

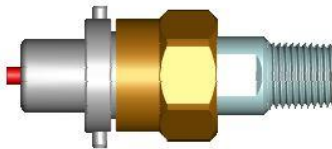
----- PRODUCT GROUP:
 RV - Relief Valve:



Liquid Oxygen Components

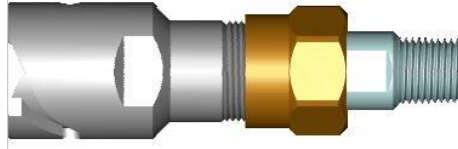
Quick Disconnects

Part Number: 001-1000-134
 Male Two-Pin QD to Male Posilock with
 Female Posilock to 1/4" Male NPT



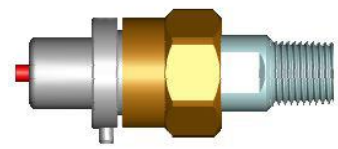
(100 piece minimum)

Part Number: 001-1000-135
 Female Two-Pin QD to Male Posilock with
 Female Posilock to 1/4" Male NPT



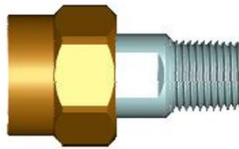
(100 piece minimum)

Part Number: 001-1000-138
 Male One-Pin QD to Male Posilock with
 Female Posilock to 1/4" Male NPT



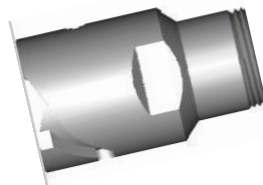
(100 piece minimum)

Part Number: 001-1000-139
 Female Posilock to 1/4" Male NPT



(100 piece minimum)

Part Number: 001-1000-140
 Female Two-Pin QD to Male Posilock



(100 piece minimum)

Part Number: 001-1000-143
 Male Two-Pin QD to Male Posilock



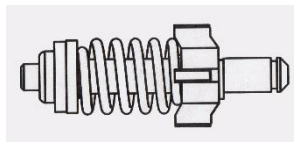
(100 piece minimum)

Part Number: 001-1000-144
 Male One-Pin QD to Male Posilock



(100 piece minimum)

Part Number: 001-1100-021
 Cartridge Assembly



(100 piece minimum)

Part Number: 801-1267-001
 PTFE Seal, Female QD, Posi-Lock,
 for Tube Seal



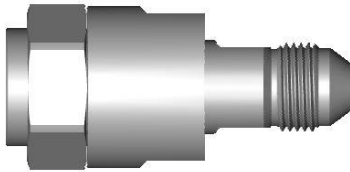
(10 piece minimum)



Liquid Oxygen Components

Live Swivel

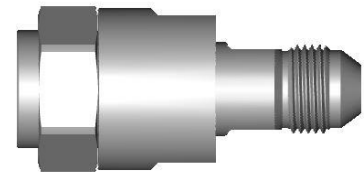
Part Number: 001-1000-136
Female 1/4" NPT with Live Swivel to
Male 1/2" SAE 45 degree



(100 piece minimum)

Part Number: 001-1000-137
Female 1/4" NPT with Live Swivel to
Male 3/4" SAE 45 degree

Part Number: 001-1000-141
Female 1/2" NPT with Live Swivel to
Male 3/4" SAE 45 degree



(100 piece minimum)

Part Number: 001-1000-142
Female 1/2" NPT with Live Swivel to
Male 3/4" SAE 45 degree

(100 piece minimum)