



InGage Series Heliox Regulators

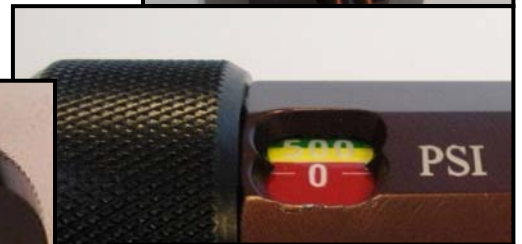
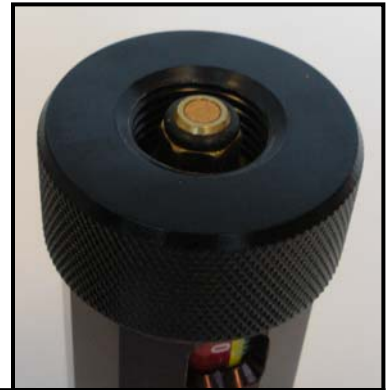
Oxygen Medical Air Carbon Dioxide Helium Heliox Nitric Oxide Nitrogen Nitrous Oxide

Tired of plastic hand knobs that crack and break, or come off and are lost?
And what about fussing around with CGA Nut & Nipple inlet connections that require a wrench to attach and detach?

Then why not use the safest, most durable and most innovative regulator available.

InGage IS the most innovative series of Heliox gas regulators available.

- ✓ **Internal Pressure Contents Gauge:** No external gauge to break on impact
- ✓ **Full 0-4000 psi Pressure Range:** Composite and HP Aluminum Cylinder Ready
- ✓ **Easy to read Tri-Color Coded Pressure Range Indicators:** Easy visual confirmation of cylinder tank pressure from as far as 8 to 10 feet away.
- ✓ **Precision flow rates using optically laser drilled orifices.**
- ✓ **Finger-Tight CGA280 and CGA890 Inlet Connection. No wrenching!**
- ✓ **Correct CGA Mixed Gas Anodized Color Coding:** Brown and Green reflecting the correct blended gas ratio utilized.
- ✓ **All-Metal-Construction assures long service life.**
- ✓ **Permanent Laser engraved markings**
- ✓ **MRI Compatible and Safe.**
- ✓ **Available in 80/20, 70/30 and 60/40 mixture ratios (special request)**



CGA-890 Yoke Body with Dome Style Knob Handle, DISS-1180 Check-Valve and Adjustable Liter Flow Outlet

Up to 150 LPM
Outlet Flow available from a
Single 50psi DISS Check-Valve



Precision Laser Engraved Identification



CGA-280 Finger-Tight with DISS-1180 Check Valve and Adjustable Liter Flow Outlet



FLOTEC, INC.
Indianapolis, IN, USA
MRI Compatible & Safe
80% Helium / 20% Oxygen
Heliox Regulator
Patent: 6,082,396 ; 6,026,854



InGage Series Heliox Regulators

Catalog Number	Inlet Connection	50psi DISS Outlet	Pressure	Mixture (%) Ratio	LPM Outlet Flow Range
D7M037-7003M1	CGA-890 Yoke	None	50 PSI	80/20	0,0.5,1,1.5,2,3,4,5,6,8,10,15
D7M037-7003P4	CGA-890 Yoke	None	50 PSI	80/20	0,1,2,3,4,6,8,10,12,15,20,25
D7M037-7003PL	CGA-890 Yoke	None	50 PSI	80/20	0,3,4,5,6,7,8,10,12,15,20,25
D7MW37-7003M1	CGA-890 Yoke	One DISS-1180	50 PSI	80/20	0,0.5,1,1.5,2,3,4,5,6,8,10,15
D7MW37-7003P4	CGA-890 Yoke	One DISS-1180	50 PSI	80/20	0,1,2,3,4,6,8,10,12,15,20,25
D7MW37-7003PL	CGA-890 Yoke	One DISS-1180	50 PSI	80/20	0,3,4,5,6,7,8,10,12,15,20,25
D7MWP7-70Z3PL	CGA-890 Yoke	One DISS-1180	70 PSI	80/20	0,3,4,5,6,7,8,10,12,15,20,25
D7MW37-6003	CGA-890 Yoke	One DISS-1180	50 PSI	80/20	-
D7MWP7-6003	CGA-890 Yoke	One DISS-1180	70 PSI	80/20	-

DRB007-7003M1	CGA-280 Nut & Nipple	None	50 PSI	80/20	0,0.5,1,1.5,2,3,4,5,6,8,10,15
DRB007-7003P4	CGA-280 Nut & Nipple	None	50 PSI	80/20	0,1,2,3,4,6,8,10,12,15,20,25
DRB007-7003PL	CGA-280 Nut & Nipple	None	50 PSI	80/20	0,3,4,5,6,7,8,10,12,15,20,25
DRB007-7003M1	CGA-280 Nut & Nipple	None	50 PSI	80/20	0,0.5,1,1.5,2,3,4,5,6,8,10,15
DRBW07-7003P4	CGA-280 Nut & Nipple	One DISS-1180	50 PSI	80/20	0,1,2,3,4,6,8,10,12,15,20,25
DRBW07-7003PL	CGA-280 Nut & Nipple	One DISS-1180	50 PSI	80/20	0,3,4,5,6,7,8,10,12,15,20,25
DRBWZ7-70Z3PL	CGA-280 Nut & Nipple	One DISS-1180	70 PSI	80/20	0,3,4,5,6,7,8,10,12,15,20,25
DRBW07-6003	CGA-280 Nut & Nipple	One DISS-1180	50 PSI	80/20	-
DRBWZ7-6003	CGA-280 Nut & Nipple	One DISS-1180	70 PSI	80/20	-

D7E037-7003P4	CGA-890 Yoke	None	50 PSI	70/30	0,1,2,3,4,6,8,10,12,15,20,25
D7E037-7003PL	CGA-890 Yoke	None	50 PSI	70/30	0,3,4,5,6,7,8,10,12,15,20,25
D7E037-7003T1	CGA-890 Yoke	None	50 PSI	70/30	0,1,2,3,4,5,6,10,15,25,40,60
D7EW37-7003P4	CGA-890 Yoke	One DISS-1180	50 PSI	70/30	0,1,2,3,4,6,8,10,12,15,20,25
D7EW37-7003PL	CGA-890 Yoke	One DISS-1180	50 PSI	70/30	0,3,4,5,6,7,8,10,12,15,20,25
D7EW37-7003T1	CGA-890 Yoke	One DISS-1180	50 PSI	70/30	0,1,2,3,4,5,6,10,15,25,40,60
D7EW37-6003	CGA-890 Yoke	One DISS-1180	50 PSI	70/30	-
D7EWP7-6003	CGA-890 Yoke	One DISS-1180	70 PSI	70/30	-

DRF007-7003P4	CGA-280 Nut & Nipple	None	50 PSI	70/30	0,1,2,3,4,6,8,10,12,15,20,25
DRF007-7003PL	CGA-280 Nut & Nipple	None	50 PSI	70/30	0,3,4,5,6,7,8,10,12,15,20,25
DRF007-7003T1	CGA-280 Nut & Nipple	None	50 PSI	70/30	0,1,2,3,4,5,6,10,15,25,40,60
DRFW07-7003P4	CGA-280 Nut & Nipple	One DISS-1180	50 PSI	70/30	0,1,2,3,4,6,8,10,12,15,20,25
DRFW07-7003PL	CGA-280 Nut & Nipple	One DISS-1180	50 PSI	70/30	0,3,4,5,6,7,8,10,12,15,20,25
DRFW07-7003T1	CGA-280 Nut & Nipple	One DISS-1180	50 PSI	70/30	0,1,2,3,4,5,6,10,15,25,40,60
DRFW07-6003	CGA-280 Nut & Nipple	One DISS-1180	50 PSI	70/30	-
DRFWZ7-6003	CGA-280 Nut & Nipple	One DISS-1180	70 PSI	70/30	-

Five (5) Year Warranty

For more than 26 years Flotec has manufactured premium quality medical gas regulators, flow meters and related medical gas devices demonstrating time and again that innovative forward thinking designs, structural durability and uncompromised attention to detail and safety equates in the delivery of superior quality products. Flotec products are proudly manufactured right here in Indianapolis, Indiana USA

Respiratory * Emergency * HomeCare * Mass Casualty * Pulmonary * Fire EMS

